

The Twickenham Tribune



Contents

- History Postcards
- Twickers Foodie
- Competitions
- Arts and Entertainment
- Review Quiz Answers
- River Crane Sanctuary
- Council News
- TwickerTape
- World War 1
- Richmond Film Society

Contributors

- Alan Winter
- Alison Jee
- TwickerSeal
- Erica White
- Mark Aspen
- Vincent Cable
- Jeremy and Sue
- Hamilton-Miller
- St Mary's University
- Shona Lyons
- Bruce Lyons

EDITORS

- Teresa Read
- Berkley Driscoll



Contact

contact@TwickenhamTribune.com
letters@TwickenhamTribune.com
advertise@TwickenhamTribune.com



Published by:
 Twickenham Alive Limited
 Registered in England & Wales
 Reg No 10549345

The Twickenham Tribune is registered with the ICO under the Data Protection Act, Reg No ZA224725

Barmy Arms, Twickenham
 Photo by Berkley Driscoll

PART 57 - HOW THE LENSBURY CLUB BECAME THE LENSBURY

Our wander around the old Borough of Twickenham on postcards takes us along the river to Teddington this week. We take a look at The Lensbury Club which was established in 1920 as a sports club for Shell staff in the UK. Land was acquired in Broom Road, Teddington, for playing fields and within a year there were active sections in cricket, rugby, football, ladies hockey, tennis and chess. Between 1920 and the beginning of the second world war in 1939, significant additions to the Lensbury estate were made with property and land purchases on both sides of Broom Road.

Our first postcard dates from the late 1920s and shows the club house and grounds from the river. The second is of a 1950s internal view which shows the opulence of even the stairs and corridors.

In 1933 the club merged with “Britannic House”, a similar club operated by BP, and created a joint venture known as the “Lensbury and Britannic House Associated Clubs” – an arrangement that lasted for thirty years. In 1938 a new clubhouse was opened which comprised 162 bedrooms, a dining room, a ballroom and many other facilities. During the war years club activities were suspended and Lensbury became a Shell office and some of the sports grounds were ploughed up to grow vegetables.



In the immediate post war years it took time for the Lensbury clubhouse to be free of its wartime role as a Shell office but by the early 1950s most of the established activities, and many new ones, were in full swing again. By 1956 membership had reached 5,000 and there were 27 active sections. The arrangements with BP came to an end in 1962 and Lensbury became once again a facility exclusively for Shell employees. Many new sports and pastimes were introduced including sailing, judo, ballroom dancing and keep-fit and membership continued to rise, reaching 7,000 by 1964.

In the 1970s Lensbury had active sections in 47 sports and pastimes including tennis, hockey, volleyball, bowls, music, drama, bridge, sailing, swimming, motor cruising, sub-aqua, mountaineering, and fishing as well as its core rowing, association football, cricket and rugby football teams. At this time membership was restricted to employees of Shell UK.

I remember playing football there in the early 1970s against Lensbury. It was probably the first away team changing room with underfloor heating that I had experienced. We always tried to get pre-season friendly fixtures at the Bank of England sports club in Roehampton and the Lensbury Club because they had some of the best pitches and facilities in London.

The clubhouse was badly damaged by a fire in April 1976; rebuilding was completed in 1977.

In 1978 Shell appointed Peter Yarranton as Lensbury's General Manager. Yarranton was himself an accomplished sportsman, notably in Rugby in which sport he had been capped five times by England. An indoor swimming pool was opened in the same year and under Yarranton's management the club's status as a world class sporting venue was enhanced. Membership reached 13,000 and many international sporting stars were attracted to use the club's facilities including top tennis players such as Steffi Graf, Chris Evert and John Lloyd during Wimbledon fortnight. Middlesex County Cricket Club used the Lensbury ground for many Second XI matches between 1982 and 1998– a recognition of the quality of the club's cricket square. Phil Tufnell, Chris Cowdrey, Mark Ramprakash, Angus Fraser, Chris Lewis and Andrew Strauss were amongst the future England international cricketers to have played at the ground

Until Peter Yarranton's retirement in 1993, Lensbury continued to build on its tradition as primarily a club for team and individual sports. It was with some pride that he described the club in 1990 as "The largest sports, leisure, social and training centre in Europe.

Times change and Shell decided that the club was no longer to be seen as just a staff benefit and needed to become a profit generating centre in its own right (sound familiar?)



Lensbury Club

Team sports, the life blood of the club since its creation, were gradually phased out and a greatly expanded gymnasium/fitness centre was introduced. The extensive playing fields on the opposite side of Broom Road to the clubhouse were disposed of and the cricket and rugby pitches on the clubhouse side were redeveloped as a pitch and putt par 3 golf course. The bowling green was closed. These changes had been initially fought hard by many of Lensbury's traditional members (particularly those in the cricket, rugby, bowls and other long-established sections which were forced to disband) but to no avail.

Today the 171 room 4 star hotel and conference facility is now called The Lensbury and there is little sign of Shell ownership although they still do. So it is what it is as an open to everyone spa and sports leisure centre, It is now hired out regularly for weddings, birthdays and other special occasions. The sports complex includes a full-sized rugby pitch and The Lensbury has recently attracted International Rugby Union teams who stayed there during the 2015 Rugby World Cup, much of which was played at the RFU stadium in Twickenham. Its Terrace Conservatory overlooks the hotel's grounds on the bank of the Thames. The lounge and bar area also provides river views and the complex also houses the more formal Dunbar Restaurant.

If you have any postcards to dispose of, any comments on this subject, or ideas for future articles, please drop me a line at alanwinter192@hotmail.com

POSTCARDS WANTED

Cash paid for Old Postcards

& postally franked envelopes.

Required by local collector / dealer.

Please ring Alan to discuss on

07875 578398

Twickers Foodie

HELP THE ENVIRONMENT – CARRY A REUSABLE COFFEE CUP

By Alison Jee

It's very much in the news at the moment – the use of plastic in packaging and the environmental impact of our profligate use of disposable cups and plastic drink bottles. Don't even get me started on plastic carrier bags! There is talk of a tax on disposable coffee cups ('latte levy') – and not before time. Apparently, here in the UK, we throw away some three billion – THREE BILLION – disposable cups each year! (and globally 100 billion single use cups go to landfill).

Did you know that the average lifespan of a single-use coffee cup is just 13 minutes? And the really worrying fact is that less than 1 per cent is recycled, as due to the polyethylene that makes them waterproof, they can only be recycled at a tiny number of specialised plants.

So what's the solution? I know it is a pain to cart one around with you, but a reusable coffee cup will not only help our environment, but it could help your pocket (as many local coffee shops are now offering a discount to people bringing their own mugs for takeaways). So there are quite a few benefits of having one's own reusable coffee cup, instead of using countless disposables to feed our caffeine addiction.



And there's also practicality – no need to deal with flimsy plastic lids, which can unleash hot coffee over your hand. (By the way, I learnt the hard way that it is really important not to position the drinking spout anywhere near to the seam of the paper cup!)

There are many different types of cups one can choose – from the bulkier, insulated varieties to a range I particularly like the look of: the Ecoffee Cup. They feel a bit like thick, yet super-light, cardboard; but they can hold hot liquids. They are manufactured using bamboo fibre (apparently the world's fastest-growing, most sustainable crop) and cornstarch, which means they are BPA and phthalate free. When you're done with the cup, it can even go on the compost heap (the silicone lid and sleeve are also recyclable). They come in loads of designs; I particularly like the William Morris collection. But these are not microwaveable, so you do need to drink your coffee before it gets cold! Sturdy but light, it has a re-sealable 'drip proof' lid for easy storage in bags, and is dishwasher safe. They are around £8-13 and come in various sizes.

There are quite a few other makes, and they vary massively in price with some costing around £30 and upwards. Byocup, KeepCup, Thermos and Bodum do some. And of course Waitrose has a range, which are microwaveable, for just £3. But remember, you still need to make a purchase each time you want to claim your free Waitrose cuppa in store!

Stocked by The Rocc, Church Street, Twickenham

Offers and Competitions

Win a pair of Ecoffee Cups

One lucky Twickenham Tribune reader can win a pair of Ecoffee Cups in the stylish William Morris range. To enter, visit their website ecoffeecup.eco and check out the 'Seaweed' William Morris design.



Then email us with its capacity (you can use ounces or mls) to win@twickenhamtribune.com together with your name and postcode, with Ecoffee in the subject. Closing date is Friday 26th January 2018. Entry deems permission to publish details of winner. No cash alternative available.

Win a Winter Spa Day at bhuti

bhuti is offering a Twickenham Tribune reader the chance to win a Winter Spa Day, which includes a facial, an exercise class and lunch in the café.

To enter, check out the bhuti website and look at the menu. Then tell us the name of the juice drink that contains the following ingredients: beetroot, carrot, pear, ginger, lime.

Email that name, together with your name & postcode, to win@twickenhamtribune.com Competition closes at noon on Sunday 14 January and the winner will be notified the following week. The prize is subject to availability.

Monthly Photography Competition

Win an 18 hole round of golf for 4 at Strawberry Hill Golf Club
With a glass of wine or beer at the bar afterwards



Email your photo to win@TwickenhamTribune.com
(include your name and postcode) All 4 players must play the same round.

Photos of pets or wildlife, or any scenes taken within the local villages, ie Twickenham, St Margaret's, East Twickenham, Strawberry Hill, Teddington, Hampton Wick, Hampton, Hampton Hill and Whitton/Heathfield

This competition is run in conjunction with [Strawberry Hill Golf Club www.shgc.net](http://www.shgc.net)

STRAWBERRY HILL GOLF CLUB

**ADULT ACADEMY
TASTER SESSIONS
NOW BOOKING**

Contact our
Professional
Peter Buchan
07795 973926



Strawberry Hill Golf Club
Wellesley Road, Strawberry Hill, Twickenham TW2 5SD
Tel: Club Manager 020 8894 0165
Email: secretary@shgc.net
To find out more visit: www.shgc.net



Arts and Entertainment

by Erica White



Saturday, 20 January - Saturday, 27 January, eves at 7.45pm, Sunday at 4.00pm (no perf. Wed.), RSS presents **BETTE AND JOAN** (Davis & Crawford) by Anton Burge, directed by Harry Medawar. at MWT, Twickenham Embankment. Tickets & info: www.richmondshakespeare.org.uk.

Sunday, 28 January - Saturday, 3 February, eves & 7.45, Sunday at 4.00pm. TTC presents **A VIEW FROM THE BRIDGE**, by Arthur Miller, directed by Dane Hardie at HHT, High St. Hampton Hill. Tickets & info: www.ttc-oxoffice.org.uk.

Tuesday, 17 January - Saturday, 20 January at 7.45 pm the Noel Coward Studio, HHT, **SEVEN LETTERS** written and directed by /Rian Flatley with original music by Lindsay Bridgwater. Tickets & info. www.ticketsourceco.uk/sevenletters.

Tuesday, 16 January at 7.45 at St Margarets Church, East Twickenham, RCS presents **CHRISTIANNE STOTIJN**, mezzo-soprano, with **JULIUS DRAKE**, piano. Tickets & info: www.richmodconcerts.co.uk.

Tuesday 16 January at 8.00pm. RFS screen **PATERSON** (USA) dir: Jim Jarmusch. NB : change of location to The Exchange, opposite Twickenham Station, TW1 1BE. Tickets & info: www.richmondfilmsoc.org.uk.

Sunday, 14 January at 2.30pm at LAC, **THE SIMON FERRIS TRIO** give an afternoon concert of Mendelssohn and Shostakovich. Tickets & info: www.info@landmarkartscentre.org.uk.

Saturday, 20 January at 7.00 for 8.00pm **COMEDY AT THE BREWERY** at Twickenham Fine Ales, 18 Mereway, TW2 6RG. Draft beer, fine wines and laughs. Tickets & info: www.brewerycomedy.com/twickenham.uk.

Abbrev: HHT - Hampton Hill Theatre: LAC - Landmark Arts Centre; MWT - Mary Wallace Theatre: RCS - Richmond Concert Society: RFS - Richmond Film Society; RSS -Richmond Shakespeare Society: TTC - Teddington Theatre Club:

The first jazz gig of the New Year at Twickenham Jazz Club will be on Tuesday 16 January. Featured are the Kelvin Christiane All-Stars Big Band. Twickenham Jazz Club convenes every Tuesday at 8.30pm at The Cabbage Patch, 67 London Road

Classics in the Afternoon

A short series of intimate Sunday afternoon concerts featuring four groups of outstanding chamber musicians.

The Simon Ferris Trio

Sunday 14th January, 2.30pm

Anthea Fry – An Afternoon at the Theatre

Sunday 28th January, 2.30pm

Joseph Spooner & Nicola Garty: Sunday 11th February, 2.30pm and

Trifarious: Sunday 25th February, 2.30pm

www.landmarkartscentre.org



The Tree Agency

darryl parkin

The Treehouse
25 King Edwards Grove
Teddington, Middlesex TW11 9LY
Telephone 020 8274 0107
Mobile 07960 123580
Fax 020 8274 0119
info@thetreeagency.co.uk
www.thetreeagency.co.uk

The Tree Agency

TwickerSeal

The official public consultation period for the council's Twickenham Riverside planning application has now finished, although you can still continue to submit comments until the day before the planning committee hearing.

If you have been looking at the many documents on the planning website, you may have found the STATEMENT OF COMMUNITY INVOLVEMENT document interesting reading.

<https://images.richmond.gov.uk/iam/IAMCache/2414365/2414365.pdf>

The document refers to the various 'consultations' held and their results, but this report seems to show little resemblance to the findings.

Each of the reports produced following the various consultations showed that the biggest concern of respondents was the issue of parking and traffic on The Embankment, but the council appears to be ignoring this.

For some reason the council thinks we want more traffic on the riverside ...





Last week we took a quizzical look at theatre in The Twickenham Tribune area. The twenty questions all had a local thespian theme. Here are the answers.

Mark Aspen Reviews has more details on the answers and great photographs of a year in the theatre. Go to www.markaspen.wordpress.com

1. 110 years ago Leopold Glasspoole set up a local theatre company, which is still thriving today. What is it now called? [BROS Theatre Company](#)
2. In Jonathan Dove's new opera adaptation of a Jane Austen novel, the Crawfords sing of the "follies and grottos of Twickenham". Which novel? [Mansfield Park](#)
3. On 16th January, it will be ten years since a local theatre was officially opened, having been in use for some while. Which theatre? [The Rose Theatre, Kingston](#)
4. The Temple to Shakespeare was built in 1756. In whose garden? [David Garrick's](#)
5. In October a new theatre was opened opposite Twickenham railway station. What is it called? [The Exchange](#)
6. The present Q2 theatre performs at The Avenue. But the original Q theatre opened to the public on Boxing Day, 1924. Which landmark did it face? [Kew Bridge](#)
7. The tenor John Templeton (1802-1886) sang in the first English production Don Giovanni and The Magic Flute. Which local theatre now stands near his house? [Hampton Hill Theatre](#)
8. Which opera by Philip Glass had its UK premiere last year in Hampton? [The Juniper Tree](#)
9. Which songwriter was born at 131 Waldegrave Road, Teddington? [Noël Coward](#)
10. "With his receding hairline and goatee beard, he is one of those theatre critics who could normally find something good to say about almost any production with a particular penchant for leading actresses". Which local theatre reviewer is the British Theatre Guide describing? [John Thaxter](#)



11. Which Grade II* listed theatre has the largest collection of fully restored Victorian scenery in the world? [Normansfield Theatre](#)



12. Which European president had his stage plays premiered at The Orange Tree Theatre in Richmond? [Václav Havel](#)

13. In February 1603 a month before her death, William Shakespeare once again brought his company of actors to a local venue to perform for Queen Elizabeth. Where was it? [Richmond Palace](#)

14. Richmond Theatre was opened in 1898. Who was the architect who designed it? [Frank Matcham](#)

15. Which famous local artist was baptised in the Actors' Church, St Paul's, Covent Garden? [J. M. W. Turner](#)

16. In 1934 Errol Flynn's first major film role in Murder at Monte Carlo was shot where? [Teddington Studios](#)

17. The Richmond Shakespeare Society has been performing Shakespeare's plays annually in the open air since 1934. In recent years, these have been put on in various locations in York House, Twickenham. What was the previous venue for the open-air performances? [Marble Hill House](#)

18. What is the official name of the theatre that would you find next to Barnes Pond? [OSO Arts Centre](#)



19. Which Twickenham poet mocked special effects in the theatre in these words: "Gods, imps, and monsters, music, rage, and mirth/ A fire, a jig, a battle, and a ball / Till one wide Conflagration swallows all." [Alexander Pope](#)

20. Who was the theatre and music hall impresario who had a lavish houseboat built on the Thames at Hampton, which included a full sized concert-hall and theatre? [Fred Karno](#)

Mark Aspen will be back next week opening the 2018 theatre season with more reviews of local theatre and music.

River Crane Sanctuary



This Week's Photos from the River Crane Sanctuary

Here is a video of bees on established self sown ivy on part of the hedgerow which was recently cut down. Photo is of a Dunnock in the same area where blackbirds, thrushes, redwings have all roosted, fed and bred.

[Bird Song & Bees Video](#)



<http://view.email.rspb.org.uk>

The River Crane Sanctuary Under Threat <http://e-voice.org.uk/rcs/>

Bon Voyage Gerry Barwick

Tonight we joined Gerry for her leaving party as she finishes as manager at Try Twickenham.

Gerry leaves Try Twickenham in the capable hands of Lesley Baillie



An Unnecessary Strike - Vince Cable

The RMT seems to be persisting with the planned strikes this week, causing additional uncertainty and inconvenience for local commuters on top of service disruption in recent months. Vince Cable MP said that he had been in touch with top management – Andy Mellors – at South Western Railway to understand why there are now strikes after a long period of relative harmony here, if not on other franchises (eg Southern).



Commenting on the latest plans by RMT Vince Cable said:

“The company is absolutely adamant that it will keep two rail workers – a driver and a guard – on the trains contrary to what RMT is claiming. So, it is difficult to see what the dispute is all about. I cannot believe the Union is going on strike, losing pay, for absolutely no reason.

“Both sides need to be careful not to test the public’s patience. There are already signs that the growing use of the railways is going into reverse because of rising fares and poor service.”



**Your local independent
oven cleaning,
spares and repair service**

All makes of ovens, hobs, extractors,
microwaves and BBQs lovingly restored
to their former glory by reliable, friendly
and fully trained experts.

www.ovenman.co.uk

Call **020 8185 7069**

Council’s Planning Application for Twickenham Riverside

The public consultation period finished on 6th January, but you can still submit your comments until the day before the planning committee meeting.

Make sure that your voice is heard
Visit site **HERE**

DO YOU KNOW WHAT YOUR COUNCIL IS DOING?

View next week's calander of events

Monday	Tuesday	Wednesday	Thursday	Friday
7:00 pm Scrutiny Committee		7:00 pm Planning Committee	1:30 pm Schools Forum	
			7:00 pm Cabinet	

Of particular interest is the cabinet meeting, which will discuss the Twickenham Riverside planning application.

Twickenham Riverside Planning Application: Secretary of State Intervention

If Permission is granted by the Planning Committee for the Twickenham Riverside Planning Application the Secretary of State will consider intervention. A Case Officer has already been appointed by the Secretary of State for planning at the Department for Communities and Local Government

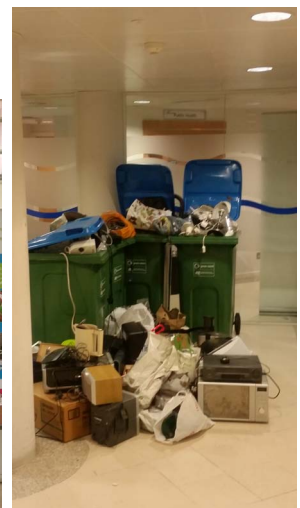
This development may mean that the Council will need to wait a little longer to know whether or not they can go ahead with their scheme, even if granted permission. Watch this space!

Declutter by ditching old and broken electrical goods

Residents were encouraged to kick off 2018 by de-cluttering their old or broken electrical items.

Richmond Council and West London Waste Authority hosted a recycling collection for old, unused, small electronic equipment from Monday 8th January through to Friday 12th January 2018.

This proved to be very successful and the council is to be congratulated for its initiative.



We met Peter Durmon who dropped off a number of unwanted electrical items.

West London Waste tweeted <https://twitter.com/WestLondonWaste/status/951431036021469189/photo/1>

Canadian Troops from Twickenham in World War 1

Jeremy and Sue Hamilton-Miller

Our recent researches into WW1 casualties from Twickenham have discovered several emigrés who returned from Canada to fight alongside the Allies.

Arthur Auton from Church Street, two Chapple brothers, George and Frederick, from Gould Road, Isaac Garlick from May Road, Reginald Glover from Popes Grove, Charles Palmer from King Street and Alfred Sheen from Grove Road, having emigrated before 1914, enlisted in various branches of the Canadian Armed Forces and arrived in Europe as part of the Canadian Expeditionary Force.

All of these men have their own stories, but there is one in particular that stands out . Alfred Sheen had served in the British Army before emigrating, and gave his occupation as “coal miner” when he enlisted in Canada in 1915, joining 2nd Tunnelling Corps. He worked in the tunnels dug beneath enemy lines for the purpose of laying mines, in preparation for the Battle of Messines in June 1917. Detonation of these mines caused huge explosions, totally disrupting enemy trenches and causing the deaths of more than 10,000 Germans; this resulted in a significant Allied victory (mining in WW1 is well described in Sebastian Faulks’ book *Birdsong*). Tragically, Alfred did not live to see the result of his labours, as he died in a tunnel collapse before the Battle occurred.

The graves of four of the emigrés, George Chapple, Arthur Auton, Isaac Garlick and Alfred Sheen are located in Commonwealth War Graves Commission cemeteries near the town of Ypres in Belgium (respectively, Tyne Cot, Poperinghe, Lijssenthoek and Maple Cross); Charles Palmer came home to



die, and lies in a War Grave in Twickenham Cemetery. Reginald Glover died, in 1919, in the Spanish influenza epidemic that swept the world, and is buried near Arras. Frederick Chapple’s body was never found: he is commemorated at the Vimy Memorial.

The contribution of Canadians troops during WW1 is recognised by the Vimy Memorial, near Arras, that pays tribute to the more than 11,000 soldiers who died. This imposing monument is on the Vimy Ridge, the site of the battle in April 1917 during which Canadian soldiers gained a hard-won triumph. The Memorial was commissioned in 1922 and unveiled by King Edward VIII in 1936.

St Mary's University Update

Feature: Interview with Student Emma Hoskins about Tourism Placement



St Mary's University, Twickenham offers all Tourism Management BA students an industry work placement and second year Emma Hoskins has recently been on a seven-week placement with tour operator Iceland Traveller, she tells us more about it below.

Tell us more about the placement.

I worked in a small team at the company's office in Esher, Surrey for one day a week across seven weeks and found the placement through the University's Centre for Workplace Learning. How do you feel the placement has helped you and given you valuable experience?

It's been really valuable. I've managed to get tourism work experience on my CV and I actually feel I got more out of it with it being a small business and workplace because I received one-to-one feedback on the work I was doing and was able to ask for advice so easily.

What were you doing on a day-to-day basis?

I was doing price comparisons between Iceland Traveller and its competitors and also the suppliers. I was also diary planning the networking events and tours and holidays to Iceland. I collated feedback from those who went on the tours, sorted out the vouchers that people get to pay for hotels and dinners on the trips, learned how mail merge works and also updated the company's social media channels.

How does the placement set you up for what you want to do in the future?

It's actually opened my eyes to potentially having my own business. It's not something I'd considered before but seeing the day-to-day life of a small business and how it all works has changed that. I've also managed to gain some invaluable experience which will set me up well for the future.

What advice would you give to other students about placements and how to maximise your opportunities while you are there?

Just grab the opportunity with both hands, you get great experience and it breaks up the semester nicely, giving you something else to focus on for a bit. It also helps you learn new skills or hone ones you already had before. I would basically say to anyone doing a placement that you should ask as many questions as you can while there and be as prepared as you can because you really get out what you put in.

What are your aims and ambitions for the future and for when you graduate?

The placement has really opened another door for me tourism-wise because that's not something I was sure I wanted to do before and then there's the other side where I'm now thinking about starting my own business.



St Mary's
University
Twickenham
London

CrusaderTravel



020 8744 0474

Escapology Experts

www.crusadertravel.com



Step on to a Leger holiday and step off into...

Battlefield Tours

with Specialist Battlefield Guides

2018/2019



Book early
& SAVE £100
per person

Featuring European Wars:
Waterloo to WW2
Worldwide Conflicts:
American Civil War,
Boer War & Vietnam

15 Brand new
tours for 2018
see inside for details



TwickerTape - News in Brief

RG. I., PR. A. AJ SS. I., ST. SF. I., PR.
200.81² 66.92³ 20.99 161⁵ 76

Bunnings takes over homebase on Twickenham Road

Bunnings is taking over a number of Homebase stores across the country, including the Twickenham Homebase store on Twickenham Road.

<https://www.bunnings.co.uk/>

Twickenham Stadium named in historic venues list

Twickenham Stadium has been named amongst the top 10 places for sport and leisure by Historic England's 'A History of England in 100 Places' campaign.

<http://www.englandrugby.com/news/twickenham-stadium-named-historic-venues-list/>

Pollution hotspots

The BBC have a web page where you can check the pollution levels in your local area.

<http://www.bbc.co.uk/news/science-environment-42566393>

Twickenham Station will be closed on Sunday 14, Saturday 20, and Sunday 21 January 2018 to facilitate works

NEW ORGAN DONATION SYSTEM HAVE YOUR SAY NOW!

The Government is planning to change the organ donation system to an "opt-out" system - where everyone is assumed to have given permission for donation unless they specifically say "no". [Click here](#) to find out more about organ donation and the proposed changes.

The Department of Health would like to know what people think of this proposal and how any changes should be made. The consultation ends on 6 March. [Click here](#) to have your say on organ donation.

Twickenham-based Psychotherapy, Counselling & Self-development



Dr. Chris L. Murphy

My role is to aid you to be yourself more fully

Counselling and psychotherapy with an experienced professional. I work with both individuals and couples – for details see my [website](#).

'Such an eye-opener! I never dreamed there was so much to me – so many different layers. I really appreciate your patient support and, at times challenge' - Advertising Executive, Richmond



www.chrismurphypractice.com

chris@chrismurphypractice.com

07477663383

Twickenham



CHRIS MURPHY PRACTICE

Making cards by Shona Lyons

For many years now I have been hand-making cards. I think my fascination with cards started when I have a child hood friend who collected Victorian Valentine Cards and we often used to look at her collection in absolute awe at their detail and beauty. When I was in my first (and last) year at Kingston Art College studying Illustration, we often had



competitions which were part of the syllabus and they took the form of outside companies coming in and for a prize would get the students to design things for them. We had a card competition which I really loved and found very inspiring and designed 8 animal cut out designs for the cards. I was very into making cut outs at the time. No one taught me and to this day I don't know how or why I started doing it but all my course work was practically all based on cut outs. I found out years later that this art work was perfected by the Jews in the diaspora who were very poor and could not

afford expensive materials and for their highly illustrated marriage certificates (Ketubah) would often make these from very delicate cut outs where all you need is a sharp knife like a scalpel and paper. So maybe it's my Jewish heritage creeping through. I didn't win the competition but found a way of slightly mass producing my cut out designs and still make those designs which have proved really popular. I also make T shirts out of them as cut outs really make fantastic stencils.



I stopped making the cards after Kingston and it wasn't until I went to live in Israel in the year 2001 that I started making the cards again, after I had a big accident and was pretty immobile for a year or so. I really enjoyed it and took part in the first craft market in Eilat. Sitting all day in the baking heat in the middle of Eilat trying to sell a few cards wasn't a great idea of making a living but I really loved making the cards and developed quite a few new techniques. Eilat

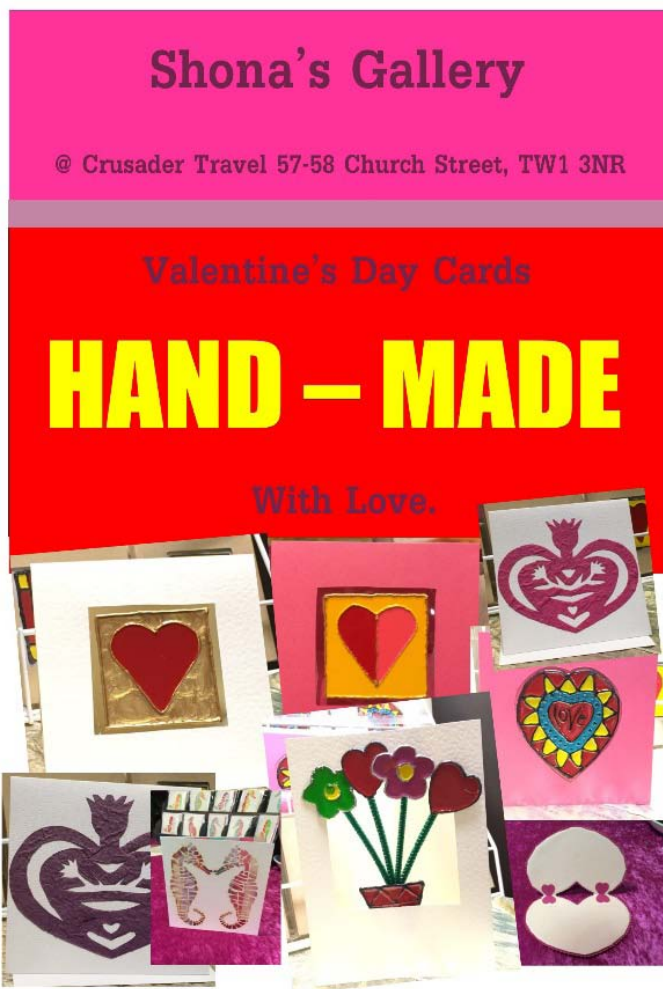
is a town in the middle of the desert in the South of Israel. For a rather backward town it actually has a thriving art scene and the two or three art shops that were there at the time were incredible and stocked just about anything you could wish for. My imagination went crazy and I constantly found inspiration in these shops and all the materials that I could wish for at really cheap prices.



When I returned from my self-imposed exile in 2006 I started working for my parents in their travel agency. I had shipped my whole studio from Eilat and all my cards with me when I came back and when a few people left the agency and there was a little space at the rear of the office I asked if I could display the cards and a few paintings etc and it was agreed that I could. I call the space “Shona’s Gallery” & I still make the cards when the mood takes me, I have one very loyal customer but that’s about it. I still continue

probably foolishly to make them. I have had a few commissions and when I was in Eilat the biggest one for someone’s daughter’s batmitzvah and if I say so myself I made some beautiful cards for that which was a star of David embedded with little flower jewels and I also worked with a printer who printed parts of the front, so the whole thing (quite a few hundred cards) was very professional and very pretty. Here in England I’ve had a few commissions but my work at the travel agency is too consuming for me to really persevere in a serious way with the cards. But I suppose I still do it a bit for the fun of it

and satisfaction I get from making them so I will make some for all the big festivals and also still do some for the Jewish festivals too, which I probably should work harder with as I don’t think anyone is really doing that in South West London who can write in Hebrew and make customised cards.



I have made quite a few for Valentines too. All artists I think go crazy with the love theme. It is a very inspirational theme is it not? Lots of great things come out of this emotion so it’s a ripe theme for most projects. If you are looking for a hand-made card for this Valentines, then don’t forget to come by Shona’s gallery at the rear of Crusader Travel and have a look at the collection. Prices are £5/6 only. It’s a steal really! When you think of the time they take and the expensive materials, you really get a good deal.

THE SMALL WORLD OF THE TWICKENHAM TRIBUNE

Bruce Lyons

Who would have believed that our small piece “Chrismukka” edition (?) which touched on my Grandfather`s etchings he made in the Palestine Campaign , reached deep into the Sinai !> A local reader sent it to his friend in Brentford who had just returned from Israel . He wrote the letter below and sent the articles and Grandfathers Davies etchings to his friend – who no doubt will now become a regular reader

Dear Bill

So many thanks for your mail, which I really appreciated, and found so very interesting.

We have just got back from a holiday in Israel, so apologies for the delay in writing back to you.

We, too, have a tenuous connection with Allenby`s campaign. Linda`s cousin`s brother in law, Avi Navon, is a historian and archaeologist. He lives on the Kibbutz Lehav, close to Beer Sheva in the Negev.

His speciality is the history of Palestine during the First World War, and on a recent visit he took us to the hill above the kibbutz and explained exactly the conduct of Allenby`s campaign against the Turks and how his original and brilliant tactics enabled the Allies (mainly of course Australian and New Zealand ANZAC troops) to outwit the Turks. Vital then, (as now) was to ensure Allied control of the Suez Canal, as without oil the War would have been doomed.

This week the Tribune is publishing another short piece about the Fallen of Twickenham and we would like to remind readers that this is the last of the four commemorative years of the First World War WW1 and there are many new Battlefield Tours on offer from the time of Waterloo to WW2 as well as special trips commemorating the American Civil War, The Boer War and Vietnam (see our advertisement)



Have you ever wondered how Hampton Pool was saved from closure and Twickenham outdoor pool was closed?

Hear the stories from those who were there at the time - what really happened. Four videos are online at <http://lidosalive.com/memories.html>

Piano Dream Becomes Reality for Teddington Arts Charity

The New Year got off to a wonderful start for Teddington's Landmark Arts Centre when it took delivery of its own concert grand piano on January 2nd. The Centre, a Registered Charity, had long dreamt of having its own concert piano and four years ago launched an appeal to raise the funds to realise the dream.



Since taking over the derelict former church of St Alban the Martyr in the early 1990s and transforming it into a vibrant community arts venue, the Landmark has gradually improved its facilities as funds allowed. However the lack of a concert piano limited the range of artists, both established names and new emerging performers that could perform within the magnificent building. The public appeal to Sponsor a Piano Key struck a chord with many local people and the majority of the £22,000 raised came from individual donations, a wonderful demonstration of how the venue is valued by the community. Boosted by the proceeds of a number of fund-raising events, including a concert by classical pianist and local resident, Joseph Tong, the purchase was finally made possible thanks to a generous grant from the Humphrey Richardson Taylor Charitable Trust.



Work Commences on Deer Park School

Work has now commenced on the new East Twickenham home for Deer Park School, which is part of a mixed development, including a Lidl supermarket.

Deer Park School, opened in September 2015 on a temporary site at Richmond Adult Community College and is a Free School sponsored by Bellevue Place Education Trust. From the 2019/20 academic year, the two-form entry school will occupy the first and second floor of the new development, above the new Lidl foodstore, at 391 Richmond Road. It will have a capacity of 420 pupils by 2024/25.

The new school will include a large dining hall, dedicated Library and a specialist classroom for Design and Technology. In addition to the on-site playground, the school will make a number of arrangements for offsite sporting activities. The Multi Use Games Area provided at first floor, will support the provision of games such as football, netball, basketball and hockey on site. This will be secured for safety and to prevent balls going into neighbouring gardens.

There will also be outdoor learning spaces provided at the second floor and the reception classes will have a covered canopy.

Email shona@crusadertravel if you would like a stall

Feel the Love!

In Church Street
Twickenham...



TWICKENHAM
BUSINESS
ASSOCIATION
TOWN

CHURCH STREET
Twickenham

Valentine Fayre Sun 11 February

From 12 midday until 6pm www.ttba.org.uk

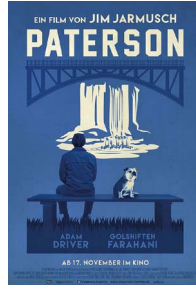
Don't miss the Church Street Valentine Fayre! There will be stalls with all kinds of gifts, flowers, cakes, chocolates, street food, and also live music.

There are a few theories about the origin of valentines. One of the most popular stories is the one based in the time of the Roman Empire, when there was a cruel emperor called Claudius. He made it illegal for couples to marry because he needed single soldiers to sign up to his army, and he thought that they would make better soldiers if the men were single as they wouldn't worry about the fate of their wives and children if they were to die in battle. But Christianity also existed at this time and there was a Christian Priest called Valentine who married couples in secret. He was caught and sentenced to death for his disobedience. In prison he befriended his jailer's blind daughter who the jailer asked the priest to teach. A miracle happened to the girl and whilst having lessons from Valentine, her sight was restored. His death sentence was the 14th of February and he left a message to the girl signed "from your Valentine" After his death Valentine was canonised and became a saint and the day was forever associated with love & friendship, the giving of gifts, cards, letters and flowers.

The second half of Richmond Film Society's Season comprises the following eight films at The Exchange:

16th January 2018 – Paterson (USA) - Directed by Jim Jarmusch

Paterson is a bus driver-cum-poet named after the New Jersey town in which he lives and works. Thinking while he drives, he writes snatches of verse on his lunch break, taking inspiration from his passengers' conversations, before going home to his wife Laura.



30th January -Embrace of the Serpent (Colombia) - Directed by Ciro Guerra

The story of the relationship between Karamakate, an Amazonian shaman and last survivor of his people, and two scientists who work together over the course of 40 years to search the Amazon for a sacred healing plant. Short-listed for the Foreign Language Oscar.

13th February – Graduation (Romania) - Directed by Cristian Mungiu

Cristian Mungiu examines the corrupt underbelly of Romanian society through the travails and moral conflicts facing a respected doctor. When his daughter suffers a debilitating assault the day before her critical final examinations, his moral world view is put to the test: just how many strings is he prepared to pull to ensure that she makes the grade ?

27th February – Men and Chicken (Denmark) - Directed by Anders Thomas Jensen

A Danish comedy of an unusual and dysfunctional family reunion and the revelation of more than just one skeleton in the closet. When two brothers return to their family home after their father's death they meet their estranged siblings, with funny and bizarre consequences.

13th March – Outside the Law (France) - Directed by Rachid Bouchareb

An Algerian family are scattered across the globe. Messaoud joins the French army; Abdelkader becomes a leader of the Algerian independence movement; Saïd moves to Paris to make his fortune in the shady clubs and boxing halls. Their interconnecting destinies reunite them in Paris.... Award winning Gangster-Drama movie.

27th March – Marshland (Spain) - Directed by Alberto Rodríguez

Set in the early years of a post-Franco Spain, two detectives with things to hide are assigned to a remote part of Andalusia to investigate the murder of two sisters. Clues are scarce, the locals are unwelcoming and the ghosts of the past are everywhere.

10th April – Toni Erdmann (Germany) - Directed by Maren Ade

A father, concerned about his career-obsessed and apparently joyless daughter, deploys his dishevelled prankster alter ego, Toni Erdmann, to make mischief, travelling to her workplace and posing as an executive 'life coach'. A startlingly original and uproarious comedy, suffused with pathos and tenderness. Oscar-shortlisted and winner of 73 awards worldwide.

24th April – A Man Called Ove (Sweden) - Directed by Hannes Holm

Short-listed for the 2017 Foreign Language Oscar, Ove is the archetypal angry old man who spends his days enforcing block association rules and visiting his wife's grave. After reaching a life changing decision, an unlikely friendship develops and life takes a new path. A funny, tragic and heart-warming transformation of an angry, solitary and regimented old man.

STRAWBERRY HILL GOLF CLUB

ADULT ACADEMY TASTER SESSIONS NOW BOOKING

Contact our Professional Peter Buchan

07795 973926



Strawberry Hill Golf Club

Wellesley Road, Strawberry Hill, Twickenham TW2 5SD

Tel: Club Manager 020 8894 0165

Email: secretary@shgc.net

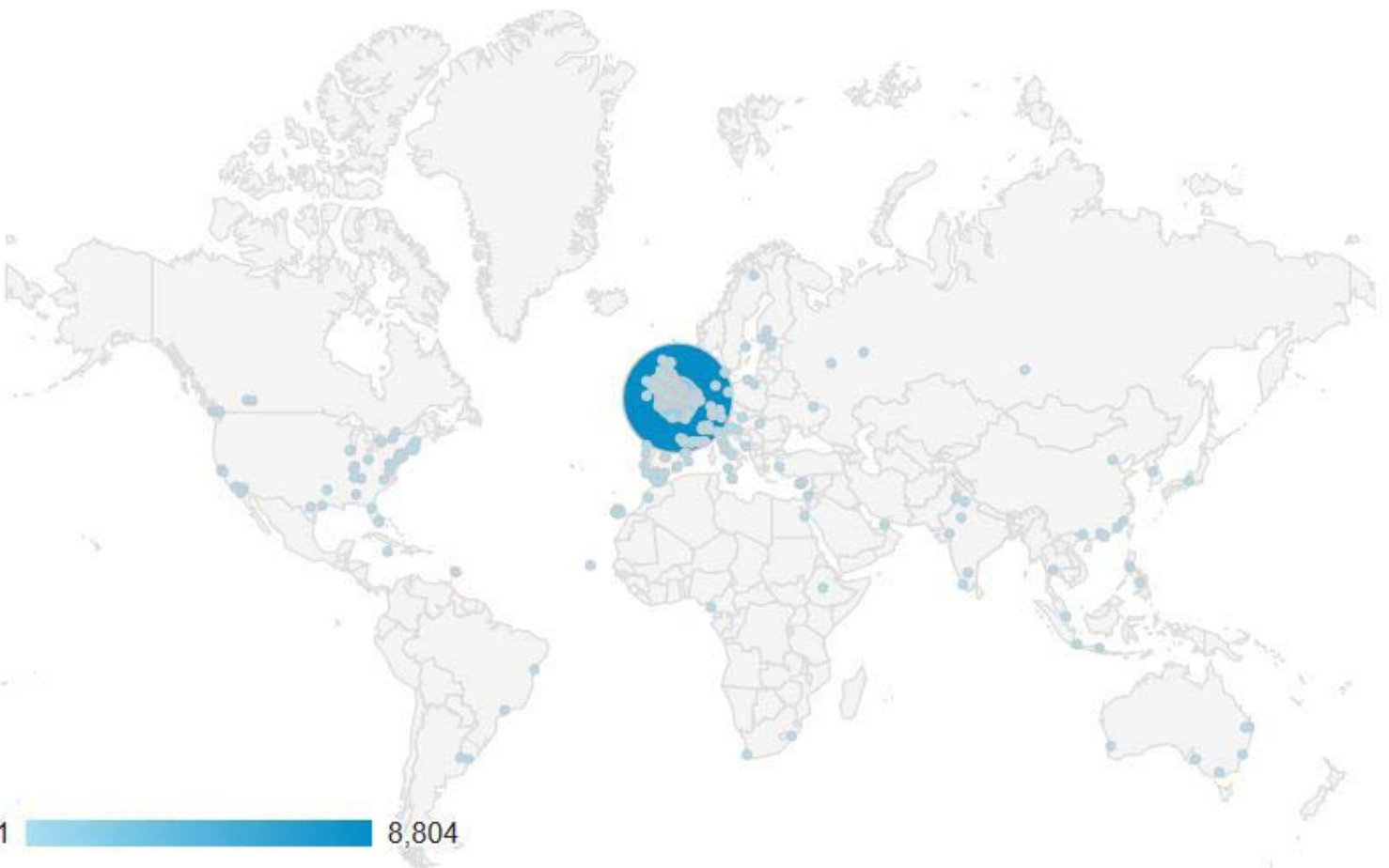
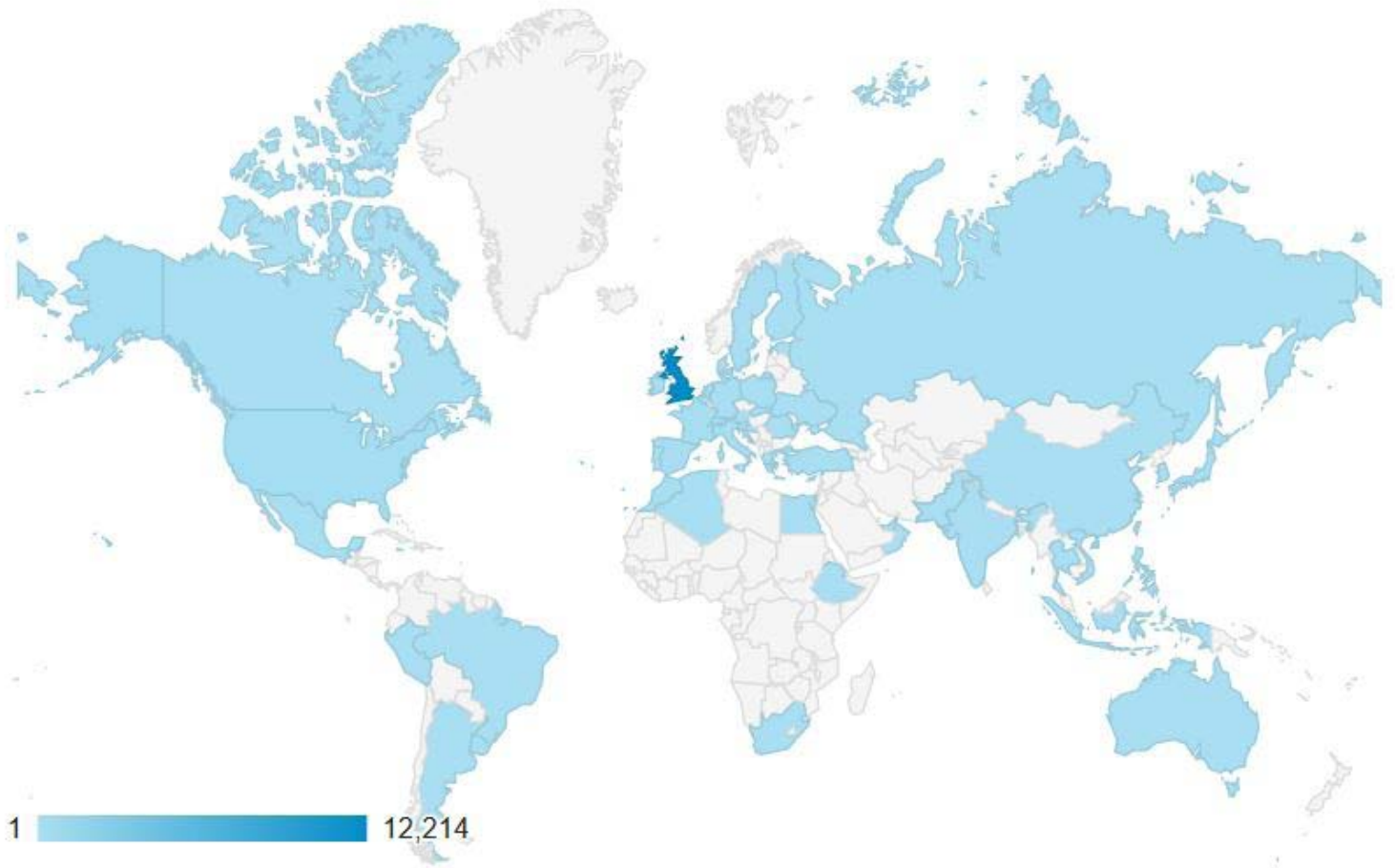
To find out more visit: www.shgc.net



Places People Play



The Twickenham Tribune readership at the start of 2018



Half Page

Quarter Page Landscape

Quarter Page Portrait

Eighth Page Landscape

Eighth Page

Example advert sizes shown above

Thousands read The Twickenham Tribune

If you are reading this you could be advertising your business with
The Twickenham Tribune. Community rates are available

Contact: advertise@twickenhamtribune.com

View ad details at www.twickenhamtribune.com/advertise

©Twickenham Alive Limited. All rights reserved. No part of this publication may be used or reproduced without the permission of Twickenham Alive Limited. While we take reasonable efforts, this online newspaper cannot be held responsible for the accuracy or reliability of information. The views and opinions in these pages do not necessarily represent those of Twickenham Alive Limited or The Twickenham Tribune. [Terms & Conditions](#)